

Oliver Ginger

for three sustaining instruments

each column represents two minutes of time (there are three columns, the piece is six minutes long).

each two minute section is then divided into two halves. in each minute, the number of pitches played is shown at the bottom of the column. for example, '1/3' – this means that in one minute, only one pitch is played, and in the other minute, the remaining three pitches are played (singularly). this division can be played in any order: so either '1/3', or '3/1', while '2/2' does not change.

the pitches played are freely chosen by the performer from the indicated pitches in each column; all of them (in each column) must be played once only.

the held duration for each pitch must be between five and fifteen seconds long – it is encouraged that the performer plays a variety of durations throughout the piece.

pitches can be played in any register on each instrument – performers are again encouraged to use the full range of their instrument throughout the piece*.

all sounds must be very quiet; bordering silence.

a silent stopwatch is required for each player.

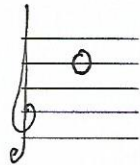
*Piano

for this performance, an ebow will be used on the strings of the instrument. since the clearest sounds for this exist in the extended-middle register, the extreme high and low registers will be out of bounds.

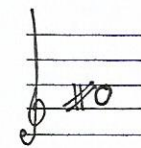
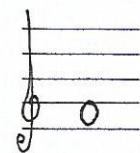
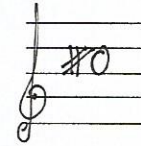
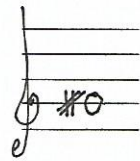
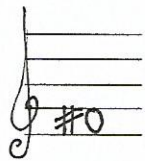
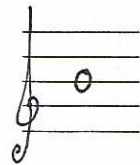
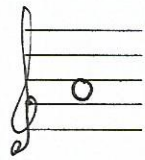
0'00"–2'00"



2'00"–4'00"



4'00"–6'00"

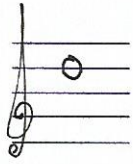


1/3

2/2

0/4

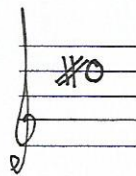
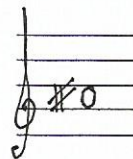
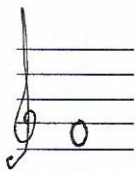
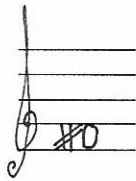
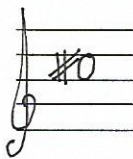
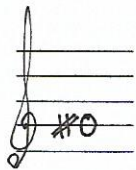
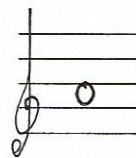
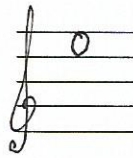
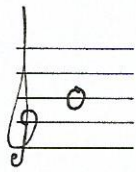
0'00"-2'00"



2'00"-4'00"



4'00"-6'00"

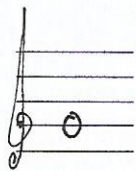


0/4

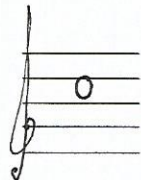
1/3

2/2

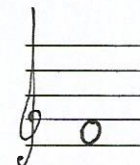
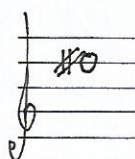
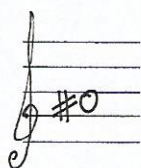
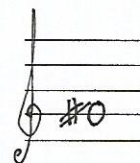
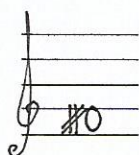
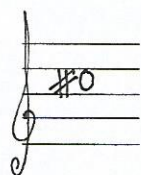
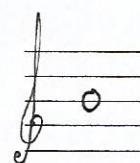
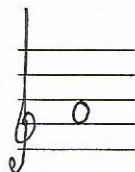
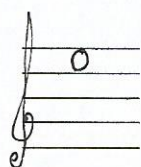
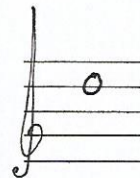
0'00" - 2'00"



2'00" - 4'00"



4'00" - 6'00"



2/2

0/4

1/3